

PCF Connectors



Connectors for PCF are different not only in terms of their construction, but also in the technology used to attach them to the cable (crimping or clamping) and in the technology used to process the endface.

The focus here is on grinding and polishing as well as on hotplate technology.

F05 connectors PCF

Order No.: **SF05-SC0-08-0010**

Color: black
Fiber Ø: 230 µm
Cable Ø: 2.2 mm
Assembly: crimp/cleave
Ferrule: metal
 crimp sleeve, black boot and dust cap inclusive

Ref. cable for attenuation measurement (0.5 m)
 KF05-F05 72050cm

Assembly tools (Page 52)



K3

F07 connectors PCF

Order No.: **SF07-DC0-08-0010**

Color: black
Fiber Ø: 230 µm
Cable Ø: 3.0 mm
Assembly: crimp/cleave
Ferrule: metal
 crimp sleeve, black boot and dust cap inclusive

Ref. cable for attenuation measurement (0.5 m)
 KF07-F07 61050cm

Assembly tools



K3

FCPC connectors PCF

Order No.: **SFCP-SK0-04-0080**

Color: metallic
Fiber Ø: 230 µm
Cable Ø: 2.2 mm
Assembly: crimp/glue/polish
Ferrule: ceramic
 crimp sleeve, black boot and dust cap inclusive

Ref. cable for attenuation measurement (0.5 m)
 KSCR-SCR 72050cm

Assembly tools
 on demand



SF05-SC0-08-0010



SF07-DC0-08-0010



SFCP-SK0-04-0080

SXHP-SC0-32-0010



SXLC-SK0-01-0030



HP connectors PCF

Order No.: **SXHP-SC0-32-0010**

compatible to HFBR 4521
Color: black
Fiber Ø: 230 µm
Cable Ø: 2.2 mm
Assembly: crimp/cleave
Ferrule: plastic
 crimp sleeve and dust cap inclusive

Ref. cable for attenuation measurement (0.5 m)
 KHPS-HPS 72050cm

Assembly tools (Page 52)



K4

LC connectors PCF

Order No.: **SXLC-SK0-01-0030**

Color: white
Fiber Ø: 230 µm
Cable Ø: 3.0 mm
Assembly: crimp/glue/polish
Ferrule: metal
 crimp sleeve, white boot and dust cap inclusive

Ref. cable for attenuation measurement (0.5 m)
 KXLC-XLC 72050cm

Assembly tools
 on demand

SC connectors PCFOrder No.: **SXSC-SK0-02-0010**

Color: white/red
Fiber Ø: 230 µm
Cable Ø: 3.0 mm
Assembly: crimp/glue/polish
Ferrule: metal
 crimp sleeve, black boot and dust cap inclusive

Ref. cable for attenuation measurement (0.5 m)
 KXSC-XSC 72050cm

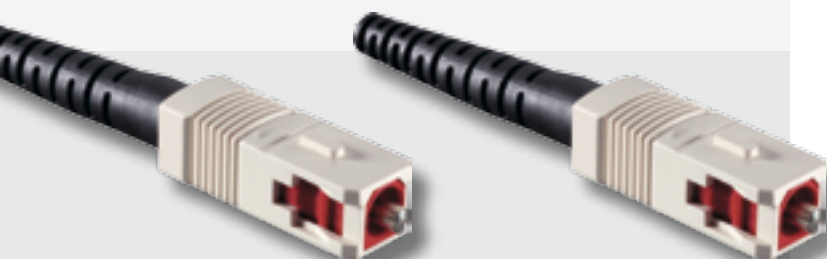
Assembly tools
 on demand

SC connectors PCFOrder No.: **SXSC-SK0-02-0020**

Color: white/red
Fiber Ø: 230 µm
Cable Ø: 2.2 mm
Assembly: crimp/glue/polish
Ferrule: metal
 crimp sleeve, black boot and dust cap inclusive

Ref. cable for attenuation measurement (0.5 m)
 KXSC-XSC 72050cm

Assembly tools
 on demand



SXSC-SK0-02-0010

SXSC-SK0-02-0020

SSMA-SK0-02-0010

SSMA-SK0-02-0011

SSMA-SW0-02-0010

**FSMA connectors PCF**Order No.: **SSMA-SK0-02-0010**

Color: metallic
Fiber Ø: 230 µm
Cable Ø: 2.2 mm
Assembly: crimp/glue/polish
Ferrule: metal
 crimp sleeve, black boot and dust cap inclusive

Ref. cable for attenuation measurement (0.5 m)
 KSMA-SMA 72050cm

Assembly tools
 on demand

FSMA connectors PCFOrder No.: **SSMA-SK0-02-0011**

Color: metallic
Fiber Ø: 230 µm
Cable Ø: 3.0 mm
Assembly: crimp/glue/polish
Ferrule: metal
 crimp sleeve, black boot and dust cap inclusive

Ref. cable for attenuation measurement (0.5 m)
 KSMA-SMA 72050cm

Assembly tools
 on demand

FSMA connectors PCFOrder No.: **SSMA-SW0-02-0010**

Color: metallic
Fiber Ø: 230 µm
Cable Ø: 2.2 mm
Assembly: clamp/cleave
Ferrule: metal
 crimp sleeve, black boot and dust cap inclusive

Ref. cable for attenuation measurement (0.5 m)
 KSMA-SMA 72050cm

Assembly tools (Page 52)



K1

PCF Connectors



FSMA connectors PCF

Order No.: **SSMA-SW0-02-0020**

Color: metallic
Fiber Ø: 230 µm
Cable Ø: 3.0 mm
Assembly: clamp/cleave
Ferrule: metal
 black boot and dust cap inclusive

Ref. cable for attenuation measurement (0.5 m)
 KSMA-SMA 72050cm

Assembly tools (Page 52)



ST connectors (BFOC) PCF

Order No.: **SXST-SK0-01-0020**

Color: metallic
Fiber Ø: 230 µm
Cable Ø: 2.2 mm
Assembly: crimp/glue/polish
Ferrule: metal
 crimp sleeve, black boot and dust cap inclusive

Ref. cable for attenuation measurement (0.5 m)
 KXST-XST 72050cm

Assembly tools
 on demand

ST connectors (BFOC) PCF

Order No.: **SXST-SK0-01-0030**

Color: metallic
Fiber Ø: 230 µm
Cable Ø: 3.0 mm
Assembly: crimp/glue/polish
Ferrule: metal
 crimp sleeve, black boot and dust cap inclusive

Ref. cable for attenuation measurement (0.5 m)
 KXST-XST 72050cm

Assembly tools
 on demand

SSMA-SW0-02-0020

SXST-SK0-01-0020

SXST-SK0-01-0030

SXST-SK0-04-0030

SXST-SW0-02-0010



ST connectors (BFOC) PCF

Order No.: **SXST-SK0-04-0030**

Color: metallic
Fiber Ø: 230 µm
Cable Ø: 3.0 mm
Assembly: crimp/glue/polish
Ferrule: ceramic
 crimp sleeve, black boot and dust cap inclusive

Ref. cable for attenuation measurement (0.5 m)
 KXST-XST 72050cm

Assembly tools
 on demand

ST connectors (BFOC) PCF

Order No.: **SXST-SW0-02-0010**

Color: black
Fiber Ø: 230 µm
Cable Ø: 2.2 mm
Assembly: clamp/cleave
Ferrule: metal
 black boot and dust cap inclusive

Ref. cable for attenuation measurement (0.5 m)
 KXST-XST 72050cm

Assembly tools (Page 52)



K2

ST connectors (BFOC) PCFOrder No.: **SXST-SW0-02-0020**

Color: black
Fiber Ø: 230 µm
Cable Ø: 2.5 mm
Assembly: clamp/cleave
Ferrule: metal
 black boot and dust cap inclusive

Ref. cable for attenuation measurement (0.5 m)
 KXST-XST 72050cm

Assembly tools (Page 52)



K2

ST connectors (BFOC) PCFOrder No.: **SXST-SW0-02-0030**

Color: black
Fiber Ø: 230 µm
Cable Ø: 3.0 mm
Assembly: clamp/cleave
Ferrule: metal
 black boot and dust cap inclusive

Ref. cable for attenuation measurement (0.5 m)
 KXST-XST 72050cm

Assembly tools (Page 52)



K2



SXST-SW0-02-0020

SXST-SW0-02-0030

SSCR-DK0-02-0030

SSCR-DK0-02-0040

SSCR-DK0-02-0020

**SCRJ connectors duplex**

IP20

Order No.: **SSCR-DK0-02-0030**

Color: black
Fiber Ø: 230 µm
Cable Ø: 2.2 mm
Assembly: crimp/glue/polish
Ferrule: metal
 crimp sleeve, black boot and dust cap inclusive

Ref. cable for attenuation measurement (0.5 m)
 KSCR-SCR 61050cm

Assembly tools
 on demand

SCRJ connectors duplex

IP20

Order No.: **SSCR-DK0-02-0040**

Color: black
Fiber Ø: 230 µm
Cable Ø: 3.0 mm
Assembly: crimp/glue/polish
Ferrule: metal
 crimp sleeve, black boot and dust cap inclusive

Ref. cable for attenuation measurement (0.5 m)
 KSCR-SCR 61050cm

Assembly tools
 on demand

SCRJ connectors duplex

IP67

Order No.: **SSCR-DK0-02-0020**

Color: grey
Fiber Ø: 230 µm
Cable Ø: 2.2 – 3.0 mm
Assembly: crimp/glue/polish
Ferrule: metal
 grey boot and dust cap inclusive

Ref. cable for attenuation measurement (0.5 m)
 KSCR-SCR 61050cm

Assembly tools
 on demand